



Manufacturers of Quality Hospitality Furniture



IMSS INTERIORS™
Design, Engineering & Manufacturing Solutions

www.ImssInteriors.com

CONTENTS

1	OVERVIEW	12-13	PROJECTS Guest Rooms & Executive Suites
2-3	WHY WE ARE DIFFERENT	14-15	PROJECTS Public Areas
4-5	PLANNING & SUPPORT SERVICES	16-17	PROJECTS Restaurants & Lounges
6-7	PRODUCTION: UPHOLSTERY & WOOD	18	PROJECTS Meeting Rooms & Ballrooms
8-9	PRODUCTION: STONE & METAL	19	PARTIAL CLIENT LIST
10-11	SUSTAINABILITY		



LOBBY PUBLIC AREA

OVERVIEW

PLANNING



STATE OF THE ART PRODUCTION

FINISH

IMSS INTERIORS™ is a premier American manufacturer of high-end custom-made case goods, upholstery and vanities for the hospitality, resort, industrial, office and retail industries. Our furniture making capabilities range from wood, stone and metal pieces to upholstered furniture.

Together in partnership with our Chinese factory, our experience spans 35 years specializing in exquisite quality furniture for some of the world's finest 3+, 4, & 5 star hotels ranging from 2400 room Las Vegas hotels to 80 room small boutiques.

Our corporate headquarters, located in San Francisco Bay Area, serves as **IMSS INTERIORS™** hub for planning, design, logistics, accounting, scheduling and customer service.



WHY WE'RE DIFFERENT

1 QUALITY

- We are committed to 100% customer satisfaction above all else. Just ask our clients.
- Customer service personnel dedicated to your project (unparalleled).

2 DEPENDABILITY, TRUST

We deliver on time

- Expeditious Quotes (3-5 days)
- Shop drawings (7-14 days)
- Model room (25-30 days)
- Production runs (60-70 days)
- Rush project possibilities



GUEST ROOM

QUALITY
DEPENDABILITY
PRICE POINT
QUALITY CONTROL



GUEST ROOM

3 PRICE POINT

- We quote & fabricate to your original specification.
- VE suggestions & equivalents are available for alternate budget purposes.

4 QUALITY CONTROL

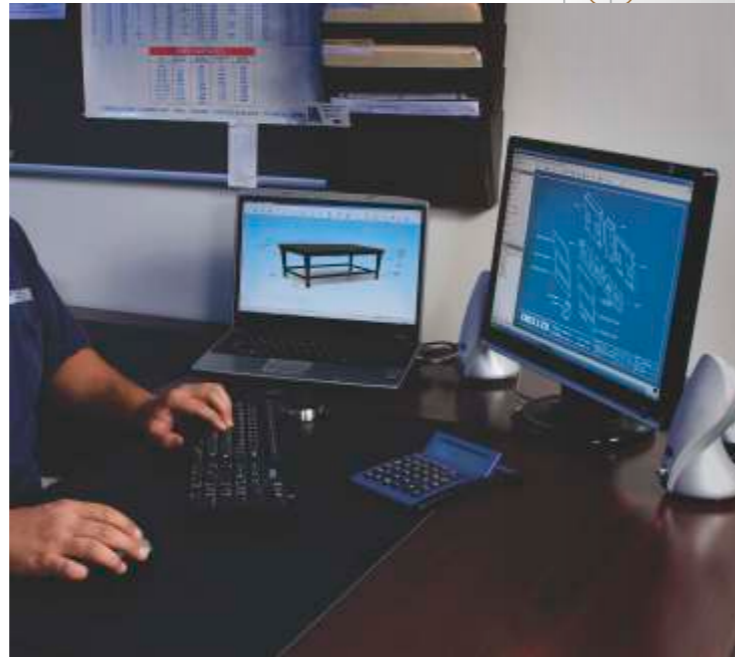
- 3.5 million sq. ft. manufacturing facility, state of the art equipment and processes.
- Bilingual production managers on the shop floor for daily quality control and communication with U.S. project managers. Client & designers have full time access to these project managers during U.S. business hours for immediate answers to questions, concerns and solutions.
- US headquarters for design, logistics, accounting, scheduling and customer service.
- Key personnel attend delivery at US project site to immediately address any questions or issues that may occur, and provide replacement solutions if any items are damaged.



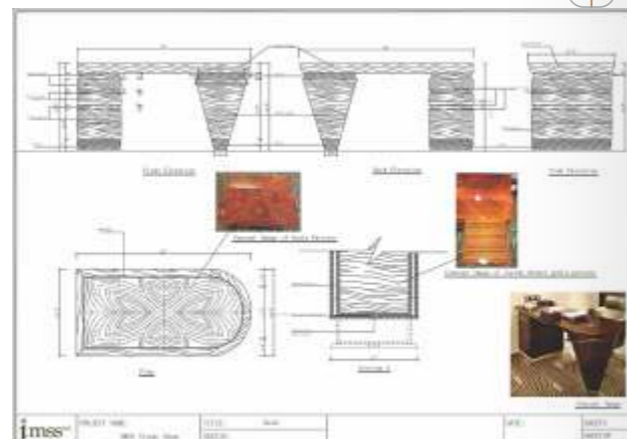
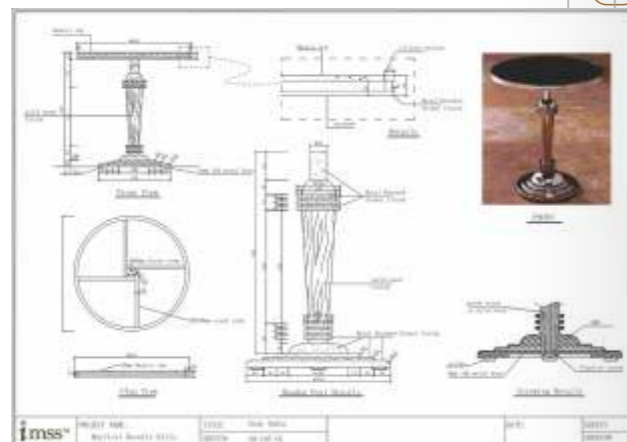
Vanity

PLANNING & SUPPORT SERVICES

- Develop detailed shop drawings.
- Review with client: Building access restrictions, obstructions, undersized door jams, etc.
- Prepare initial budgets.
- Research availability of materials and finishes; propose substitutions as may be required.
- Materials and finish sample boards provided.
- Review constructability, structural integrity and stability.
- Review "KD" possibilities for difficult items.
- Review costs to ensure client's budgets can be respected.
- Coordinate shop drawings with sub suppliers.
- Evaluate "Value Engineering" options.
- Prepare prototypes as may be required.
- Model rooms.
- Public area and small production runs.
- Identify long lead time items.
- Full/large production runs.

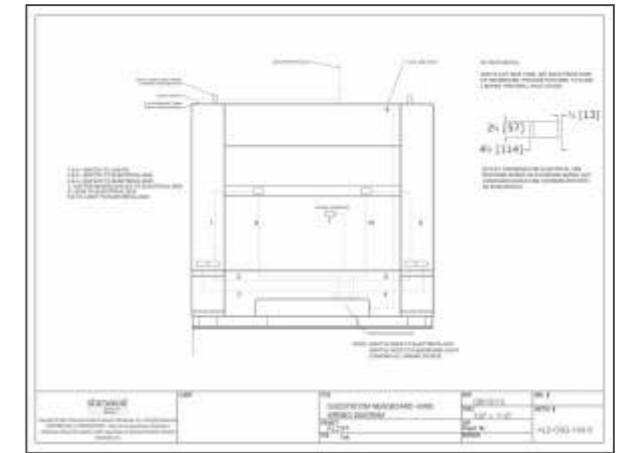


Planning



Shop Drawings

- Analyze schedule, adjust accordingly.
- Submit initial shop drawings to client for review and redlining.
- Review client's response and incorporate into final shop drawings.
- Maintain logs and controls on all submissions, revisions and approvals.
- Follow up, coordinate, photograph and report activities and development to client.
- Coordinate loading, delivery and oversee preparation of all shipping documents as may be required.



Before installation



After installation

PRODUCTION

- Manufacturing facilities totaling 3.5 million square feet.
- Full range of primary crafts and skills including Wood, Stone, Metal and Upholstery.
- Computerized drafting facilities.
- Average output 40,000 pieces per month.
- ISO 9001 Certificated.
- ISO 14001 Certificated.
- LEED Compliant Capabilities
- Green Building Council guidelines compliant.
- Quality Control procedures and inspections maintained at every phase of fabrication.
- QC Engineers are assigned to inspect activities consistent with their field of expertise.
- Final inspection of product occurs in the shipping area prior to packaging.
- All approved items are labeled and recorded accordingly.



- All cartons and packing materials are inspected during packing of goods.
- Carton labeling check to ensure compliance with client's requirements.
- Carton packing is inspected to ensure proper furniture protection.
- All cartons marked and recorded as they are loaded into the container.
- Container loading is carefully supervised to guard against damage in transit.
- Packing list is applied to last carton loaded into container and emailed to client.



State of the art production facility



UPHOLSTERY

WOOD

PRODUCTION



STONE



- In addition to factory supervisory staff, we have American bilingual Key Staff on shop floor daily for quality control.
- Client and Designers have full time access to these managers during US business hours.
- **IMSS INTERIORS™** managers oversee all aspects of IMSS INTERIORS' projects ensuring compliance and quality.
- Integrated management teams maximize capabilities and productivity of workforce.
- **IMSS INTERIORS™** staff interface with work force at all levels from planning to container loading.



METAL

SUSTAINABILITY

Green manufacturing compliance standards are available for the US Green Building Council LEED Rating System, NAHB Green requirements and local city ordinances:

- Waste material content recycled.
- Rapidly renewable materials: MDF, Bamboo and some reconstituted veneers.
- Wood harvested from FSC Certified renewable forests.
- Indoor environmental quality products: formaldehyde free and low VOC rating.
- Factory indoor environmental conditions meet 90% of LEED rating points.



IMSS INTERIORS™ makes every effort to implement green/sustainable manufacturing processes:

- In the design stage, we specify the use of materials that pass SVHC requirements and conform to BIFMA or SCS specifications.
- In material selection, we use a minimum of E1 standards board and FSC certified solid wood.
- In the manufacturing process, we use waste-reducing techniques:
 - Centralized dust extraction systems to prevent contamination to surrounding areas.
 - State of the art computer-aided production equipment to obtain maximum material yield. This also reduces wasteful energy consumption.
 - Clean surface technology through UV finishing which cuts down on toxic emission levels. This also makes energy consuming drying/conditioning rooms redundant/unnecessary.
 - Biodegradable materials used.
- Reduce packaging material to the safest minimum.

Central wood dust system improves indoor air quality and emits few dust particles in the environment.



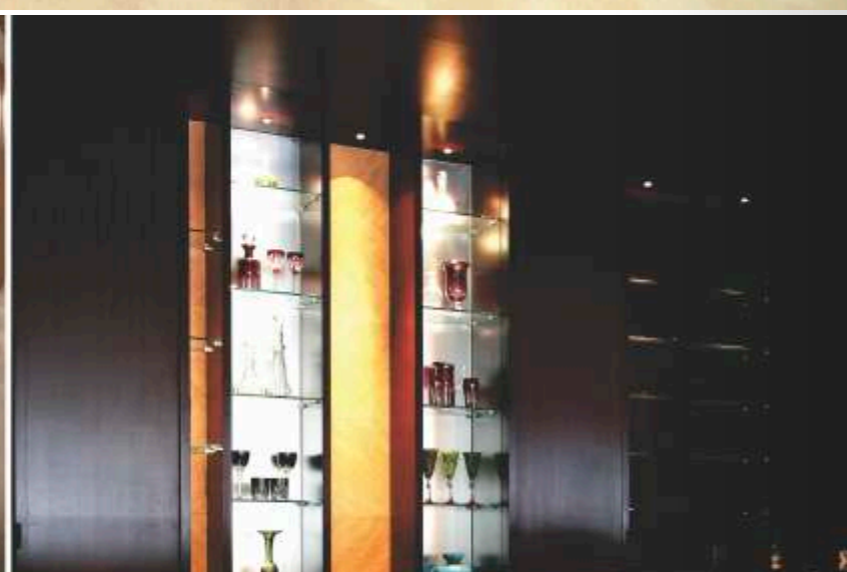


PROJECTS
GUEST ROOMS & EXECUTIVE SUITES
HOSPITALITY





PROJECTS
PUBLIC AREAS
HOSPITALITY



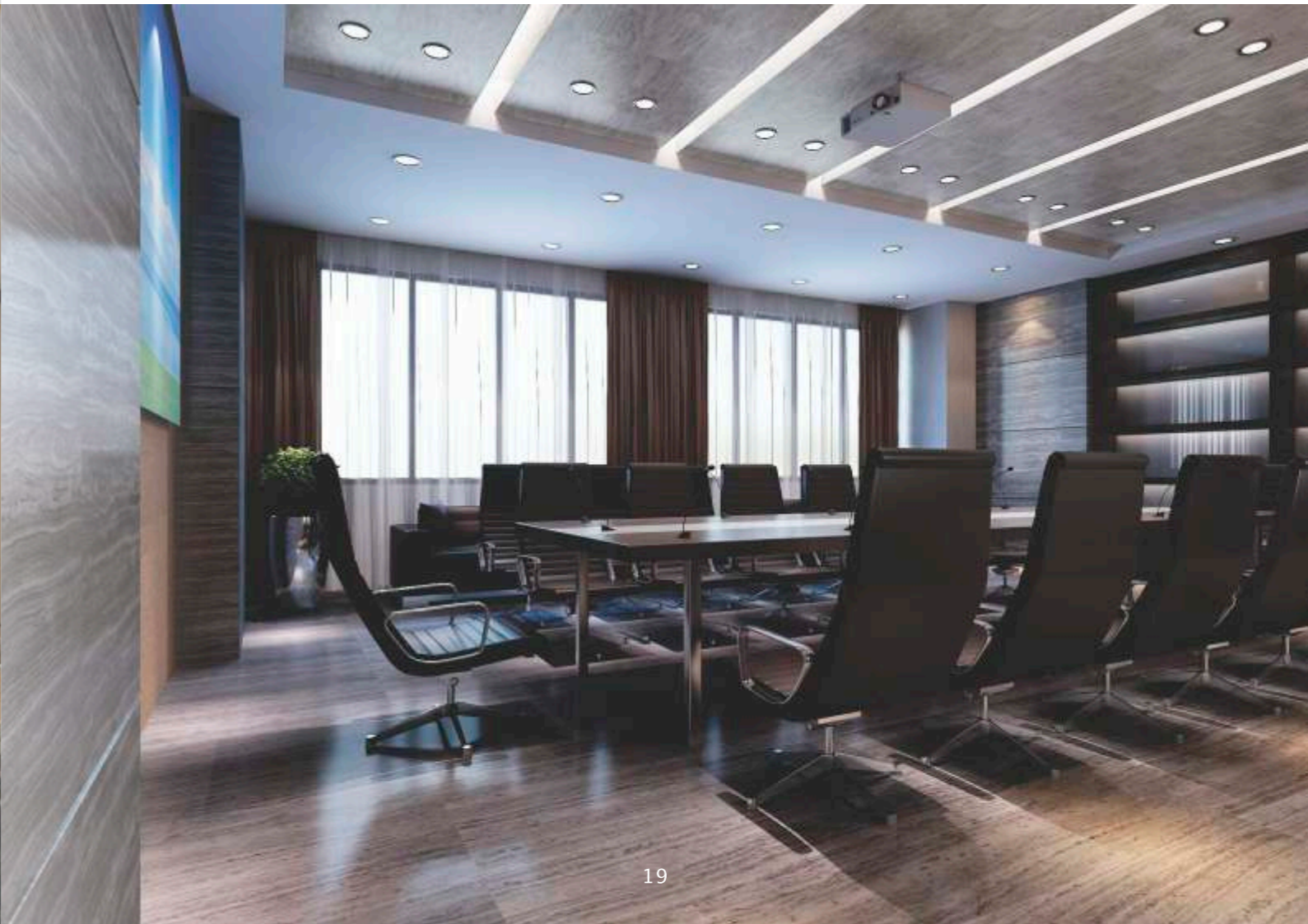
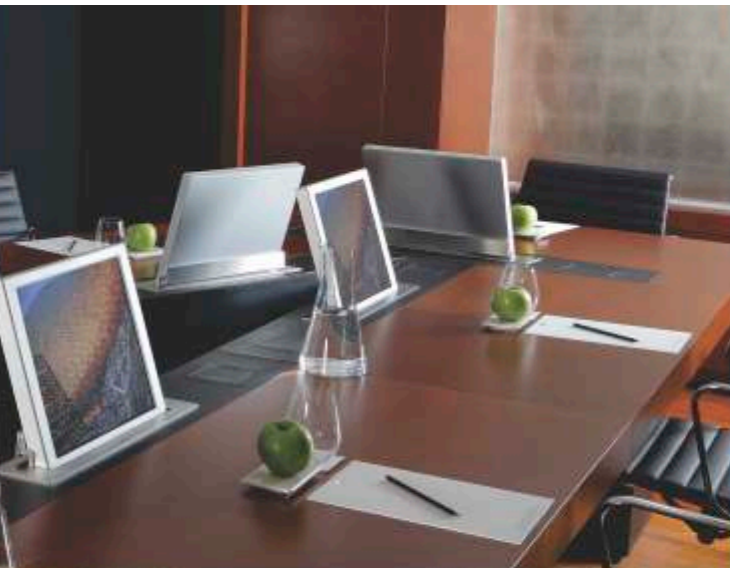


PROJECTS
RESTAURANTS & LOUNGES
HOSPITALITY





PROJECTS
MEETING ROOMS & BALLROOMS
HOSPITALITY



PARTIAL CLIENT LIST

ALOFT, BEACHWOOD, OH	HILTON HOTEL, HARRISBURG, VA
ALOFT, BRICKWELL, MIAMI, FL	HILTON HOTEL, MEMPHIS, TN
ALOFT, CUPERTINO, CA	HILTON HOTEL, NEW YORK CITY, NY
ALOFT, DENVER (DOWNTOWN), CO	HILTON HOTEL, OMAHA, NE
ALOFT, DETROIT, MI	HILTON HOTEL, SAN JOSE, CA
ALOFT, EL SEGUNDO, CA	HILTON HOTEL, TORREY PINES RESORT, LA JOLLA, CA
ALOFT, MIAMI, FL	HOLIDAY INN, TUPELO, MS
ALOFT, NASHVILLE, TN	HOTEL 3030, NEW YORK CITY, NY
ALOFT, NEW YORK CITY, NY	HOTEL JEROME, ASPEN, CO
ALOFT, OKLAHOMA CITY, OK	HYATT REGENCY, CORAL GABLES, FL
ALOFT, SOUTH BEACH, FL	HYATT REGENCY, SAN FRANCISCO, CA
ALOFT, TAMPA, FL	HYATT REGENCY-WIND WATCH, LONG ISLAND, NY
CEAZAR ENTERTAINMENT, BOSSIER CITY, LA	KNICKERBACKER, NEW YORK CITY, NY
CHURCH OF SCIENTOLOGY, DALLAS, TX	ON THE AVENUE, NEW YORK CITY, NY
CHURCH OF SCIENTOLOGY, LAS VEGAS, NV	MARRIOTT CRYSTAL GATEWAY, ARLINGTON, VA
CHURCH OF SCIENTOLOGY, NASHVILLE, TN	MARRIOTT SAMPLE ROOM, SAN DIEGO, CA
CHURCH OF SCIENTOLOGY, QUEBEC, CANADA	MARRIOTT, SEATTLE WATERFRONT, WA
CHURCH OF SCIENTOLOGY, WASHINGTON DC	MILFORD PLAZA, NEW YORK CITY, NY
COURTYARD BY MARRIOTT, SEATTLE, WA	PLANET HOLLYWOOD, LAS VEGAS, NV
CROWN PLAZA, KEY WEST, FL	RADISON, LEXINGTON, NY
COURTYARD BY MARRIOTT, SEATTLE, WA	THE PAUL HOTEL, NEW YORK CITY, NY
DOUBLETREE-METRO, NEW YORK CITY, NY	WESTIN, KANSAS CITY, KS
FAIRMONT HOTEL, DALLAS, TX	WESTIN, WILMINGTON, DE





Visit us at: www.ImssInteriors.com

1415 Oakland Blvd • Suite 202 • Walnut Creek, CA 94596

Ofc: 925.258.9909 • Fax: 925.258.9908

Email: mgompertz@imssinteriors.com



Manufacturers of Quality Hospitality Furniture

